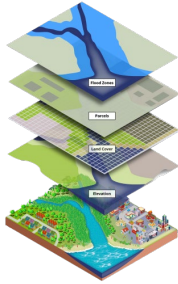


GIS stands for Geographic Information Systems and is a computer-based tool that examines spatial relationships, patterns, and trends in geography.

GIS mapping produces visualizations of geospatial information. The 4 main ideas of Geographic Information Systems (GIS) are:

Create geographic data.

- Manage it in a database.
- Analyze and find patterns.
- Display it on a map.



Navajo Land Department GIS works closely with County Record offices, Bureau of Indian Affairs and US Bureau of Land Management to verify and research Navajo Nation land status, coordinates, and boundaries. The GIS section has digital information of all land status and chapter boundaries for the Navajo Nation. Utilizing current technologies to integrate data into automated geographic information for access and distribution of non-sensitive data for the public.



CONTACT US:

Vacant, GIS Supervisor



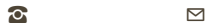
Vacant, GIS Analyst



Elton Watson, GIS Technician

☎ (928) 871 – 7640 ✉ ewatson@nnld.org

Vacant, GIS Technician



Brent Begay, Computer Operator - St. Michaels

☎ (928) 871 – 7640 ✉ bbegay@nnld.org

Vacant, Computer Operator - Chinle



Vacant, Computer Operator - Crownpoint



Antoinette Begay, Computer Operator - Tuba City

☎ (928) 283 – 3009 ✉ abegay@nnld.org

Williamena Begay, Computer Operator - Shiprock

☎ (505) 368 – 1122 ✉ wbegay@nnld.org

VISIT OUR WEBSITE:

WWW.NNLD.ORG



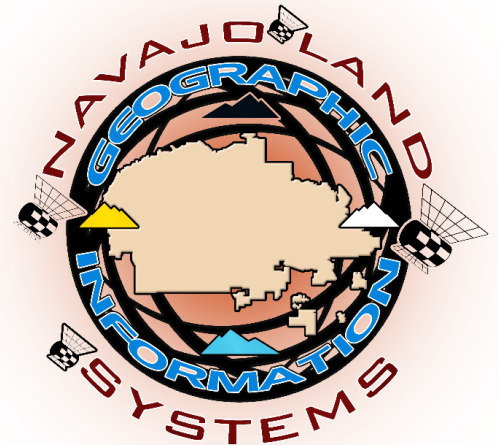
NAVAJO LAND
DEPARTMENT
2B TAYLOR ROAD
ST. MICHAELS, AZ 86511



GEOGRAPHIC INFORMATION SYSTEM

NAVAJO LAND DEPARTMENT

DIVISION OF NATURAL RESOURCES





GEOGRAPHIC INFORMATION SYSTEM



Navajo Land Department GIS's group mission is to establish a positive working relationship with Navajo Land Employees and their clients; to develop and manage GIS and IT software and hardware. We provide various computer generated maps with land layers, boundaries and land status information on the Navajo Nation. Also, coordinate, guide, and administer all digital information of the Navajo Nation's land utilizing current technologies to integrate this data into an effective, efficient and productive medium to make general informative maps available to the public.

The Navajo Land Department GIS section acquires data from numerous internal divisions, departments, with permission from respective sources for mapping purposes only. We do not share this data. However, if one requires certain GIS data, please feel free to contact the respective owners.



NAVAJO LAND DEPARTMENT



NAVAJO LAND TITLE DATA SECTION



The Navajo Land Title Data Section has established the Navajo Nation System, a Title Plant designed to centralized Navajo Land record in a secured online database, which can be accessed through a web-based application. Navajo Land records are currently being populated into the Navajo Nation System.

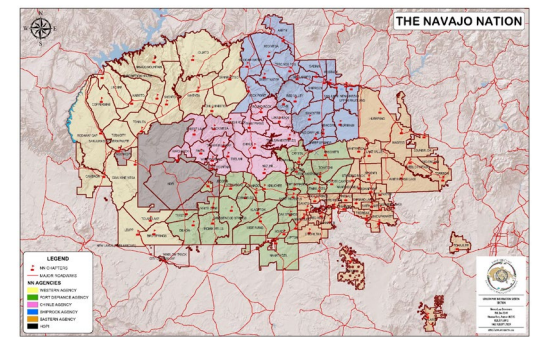
The Navajo Nation System provides not only data storage and security but also module solutions to internal operations and the ability to manage the following Navajo Land Records:

- Titles, Deeds, and Leases
- Land conveyances
- Trust Asset accounting

The Navajo Nation System is developed and maintained by Prism eSolutions, a Division of Andy Frain Services.



MAP REQUEST



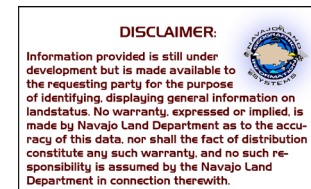
One of the services provided by the Navajo Land Department GIS section is creating maps. To place an order, please submit a Map Request Form.

All map requests are to be prepaid before a map can be produced.

All maps can be made to your desired specifications from an 8.5"X11" sheet to a 52"X36" Land Map.

Most maps can be produced for you in a timely manner, depending on the information needed on the map.

Pricing for maps along with the Map Request Form can be found on our website.



DISCLAIMER:

Information provided is still under development but is made available to the requesting party for the purpose of identifying, displaying general information on land status. No warranty, expressed or implied, is made by Navajo Land Department as to the accuracy of this data, nor shall the fact of distribution constitute any such warranty, and no such responsibility is assumed by the Navajo Land Department in connection therewith.

